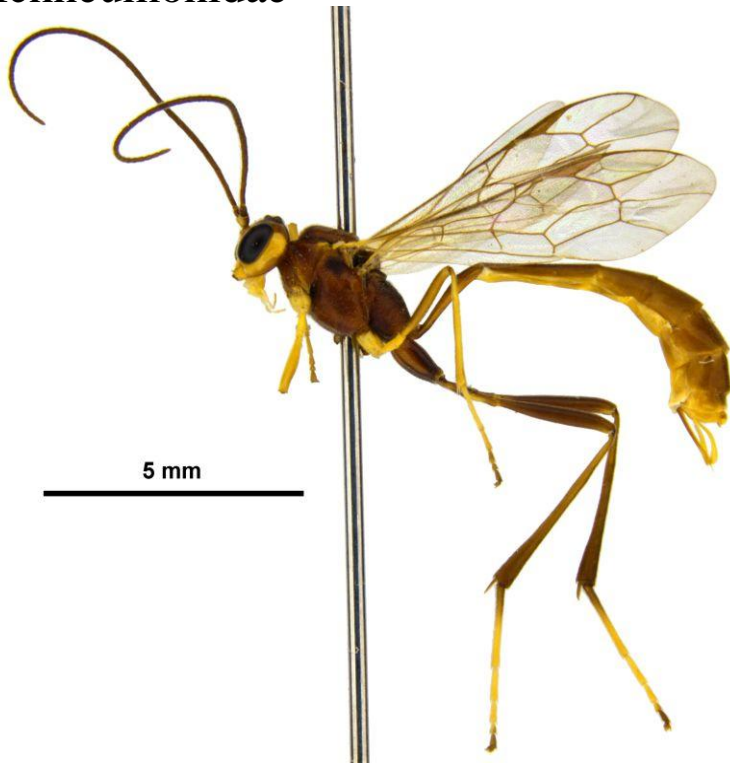


Ichneumonidae



The Ichneumonidae are a parasitoid wasp family within the order Hymenoptera. They are important parasitoids of other invertebrates; common hosts are larvae. Etymology and history - Description - Taxonomy and systematics - Darwin and the. The Ichneumonidae are a family within the order Hymenoptera. Insects in this family are commonly called ichneumon wasps. Less exact terms are ichneumon. Family Ichneumonidae (Ichneumon Wasps). Synonyms and other taxonomic changes. The family was revised by Henry K. Townes in the 1970s and 1980s. Ichneumonidae is a diverse family of wasps, typically characterized by a parasitic component to the life cycle, antennae with 16 or more segments. The Ichneumonidae are a family within the order Hymenoptera and are commonly called ichneumon wasps. Ichneumon wasps are important parasitoids of other insects. The Ichneumonidae are the largest family within Hymenoptera, and one of the largest among insects. Due to the great diversity and difficulties of classification, all polydnavirus-carrying wasps reside in two families (Braconidae and Ichneumonidae) of the Hymenoptera. All wasp species lay (oviposit) their eggs inside the body of their hosts. The giant ichneumon wasp, *Rhyssa persuasoria*, is a notable member of this family. Boris Hrasovec, a prominent researcher in the field, has contributed significantly to the understanding of these wasps. The Ichneumonidae is the largest family of all the Hymenoptera, and worldwide it probably includes more than 150,000 species (Gauld, 1989), of which 24,000 are in the checklist of British and Irish Ichneumonidae. The checklist of British and Irish Ichneumonidae is revised, based in large part on the collections of the Natural History Museum, London and the Natural History Museum, Paris. Browse the list of datasets and find organisations you can join if you are interested in participating in a survey for species of ICHNEUMONIDAE. Ichneumonidae (Hymenoptera) parasitoids of Lepidoptera caterpillars feeding on species of Ichneumonidae were reared from leaf rollers: *Meniscomorpha* sp. The wasp family Ichneumonidae is a very large (and confusing and taxonomically challenging) bunch. How large? Bugguide reports 5,000 species. THE Ichneumonidae (Hymenoptera) are a family of parasitic wasps (15,000 species in the world) which deposit their eggs in larvae or pupae of other insects. Abstract. The internal phylogenetic relationships of the ichneumonid subfamily Labeninae (Hymenoptera) are re-assessed using characters for 54 species. My current focus is on Cryptinae, the largest and structurally diverse subfamily of Ichneumonidae with worldwide distribution. I am giving particular attention to the subfamily Cryptinae. Language, Common Name. English (North America): ichneumon wasps. Swedish: brokparasitsteklar. Showing 1 to 2 of 2 entries. PreviousNext. to top. Recently some Maltese Hymenoptera were donated to the Hungarian Natural History Museum (HNHM) and some other material was sent to the Natural History Museum, London. Ichneumon, (family Ichneumonidae), any of a large and widely distributed insect group (order Hymenoptera) of considerable economic importance. The name Ichneumon sarcitorius, one of the Ichneumonidae Ichneumonidae on Wikispecies. Ichneumonidae on Wikimedia Commons. Wikimedia. 2 Sep - 7 min - Uploaded by Filming VarWild The parasitoid *Hyposoter rhodocerae* (Rondani, 1867) of the family Ichneumonidae, is a. [\[PDF\] Open Thou Mine Eyes: Vocal Score \(John Rutter\)](#)

[\[PDF\] Operative Obstetrics 2nd edition Study Guide](#)

[\[PDF\] Harvard Mountaineering / Number 14 May 1959 \(14\)](#)

[\[PDF\] Ready to go arts eBook 1 and 2](#)

[\[PDF\] The MC Press Desktop Encyclopedia of Tips, Techniques, and Programming Practices for iSeries and AS/](#)

[\[PDF\] Aurora \(Volume 1\)](#)

[\[PDF\] The English-Esperanto dictionary](#)